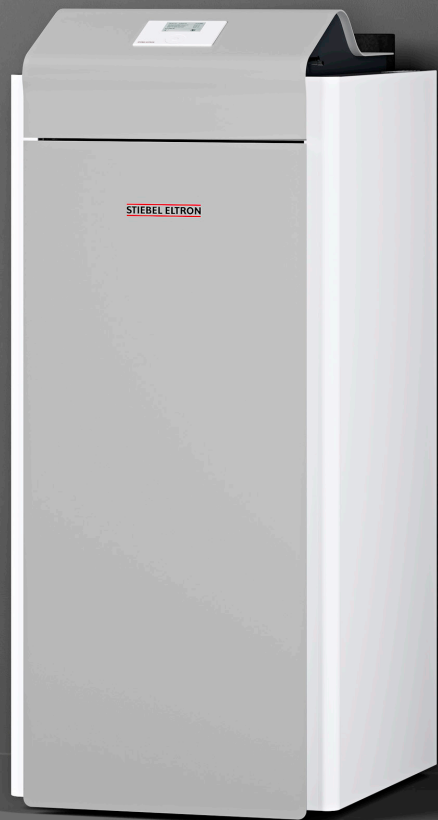


STIEBEL ELTRON

WPE-I H 230

Premium

Maximum living comfort
regardless of season



WPE-I H 230

GEOTHERMAL HYDRONIC HEAT PUMPS

Maximum living comfort and efficiency

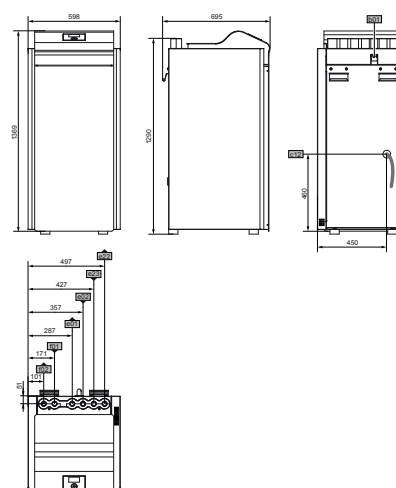
Comfort moves into your home with the WPE-I H Premium inverter geothermal heat pumps. This device uses the heat from the ground for heating and hot water operation. The year-round constant heat output with high flow temperatures offers maximum living comfort regardless of the season.

Product features

- › Geothermal heat pump for hot water and heating
- › Made in Germany
- › Year-round optimal operation and maximum efficiency thanks to inverter technology
- › High flow temperatures of up to 75 °C for energy-efficient heating and large amounts of mixed water
- › Future-proof and environmentally friendly refrigerant
- › Optional integration into the home network and control via smartphone



Dimensions



Model	PREMIUM				
	WPE-I 04 H 230	WPE-I 06 H 230	WPE-I 08 H 230	WPE-I 12 H 230	WPE-I 15 H 230
Article no.	202613	238610	238611	238612	238613
Phases Rated voltage	V Single 230	V Single 230	V Single 230	V Single 230	V Single 230
Output at B0/W35 (EN 14511)	kW 4.19	kW 6.57	kW 7.64	kW 12.66	kW 14.78
Coefficient of performance at B0/W35 (EN 14511)	4.60	4.60	4.67	5.01	4.86
Sound power level (EN 12102)	dB(A) 38 - 40	dB(A) 38 - 43	dB(A) 39 - 45	dB(A) 39 - 46	dB(A) 39 - 47
Max. flow temperature	°C 75 °C	°C 75 °C	°C 75 °C	°C 75 °C	°C 75 °C
Domestic hot water *	■	■	■	■	■
Pool heating *	■	■	■	■	■
Inbuilt heat pump manager	■	■	■	■	■
Refrigerant	R454C	R454C	R454C	R454C	R454C
Height Width Depth	mm 1369 598 658	mm 1369 598 658	mm 1369 598 658	mm 1369 598 658	mm 1369 598 658
Weight	kg 180	kg 180	kg 180	kg 190	kg 190

STIEBEL ELTRON is committed to our policy of continual improvement, some features may have subsequently been changed or even removed. Our advisors will be happy to consult with you regarding the currently applicable equipment features. The images used in this data sheet are for reference only.